

**特点和应用: Features and Applications**

- ◆ 差模增强型高性能电源滤波器
- ◆ 宽范围的衰减特性
- ◆ 适用于各种电子和数字设备（尤其是开关电源）
- High performance filters with differential mode choke
- Broadband attenuation characteristics
- Available for various digital systems(particularly for switching power supplies)

**技术参数: Technical Specifications**

额定电压 Rated Voltage	115/250VAC
工作频率 Operating Frequency	50/60Hz
额定电流 Rated Current	3—60A
耐压试验（一分钟） Test Voltage(1min)	1500VDC(Line/Line) 1500VAC(Line/Ground)
气候类别 Climatic Category	25/085/21

型号 Model	额定电流 Rated Current (A)	外型尺寸 Dimension fig	绝缘电阻 Insulation Resistance	泄 漏 电 流 Leakage Current (μ mA)	电路图 Circuit Diagram fig	端子方式 Terminal	
SGAD3-3A3	3A	1	$\geq 500M\Omega$	0.9	1		
SGAD3-6A3	6A	1	$\geq 500M\Omega$	0.9	1		
SGAE3-3A3	3A	2	$\geq 500M\Omega$	1.0	1		
SGAE3-6A3	6A	2	$\geq 500M\Omega$	1.2	1		
SGAG4-10A3	10A	3	$\geq 500M\Omega$	1.5	1		
SGAG4-20A3	20A	3	$\geq 500M\Omega$	1.5	1		
SGAH4-30A3	30A	4	$\geq 500M\Omega$	1.5	2		
SGAH4-40A3	40A	4	$\geq 500M\Omega$	1.5	2		
SGA14 - 50A3	50A	5	$\geq 500M\Omega$	1.8	2		
SGA14 - 60A3	60A	5	$\geq 500M\Omega$	1.9	2		

注) 常规型号列表, 未列出型号可联系销售索取资料

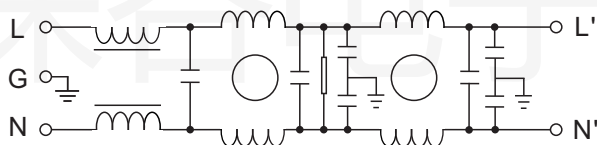
电路原理图: Electrical Schematics

Fig.1

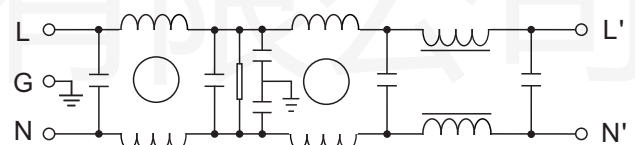


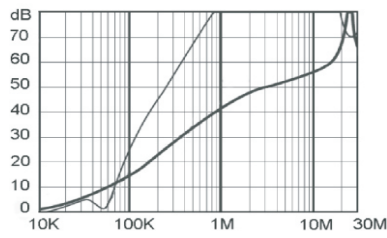
Fig.2

备注:可根据客户要求定做滤波器

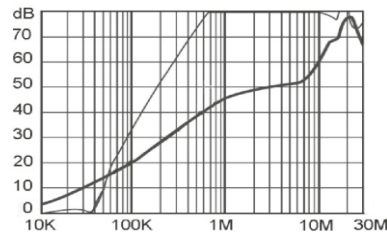
Note: Customers may request customized filters

典型插入损耗: (50Ω 测试系统) Typical Insertion Losses: (Measured in 50Ω system)

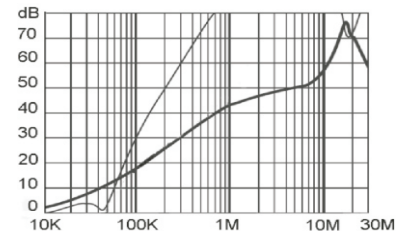
-- 共模 (Common Mode) -- 差模(Differential Mode)



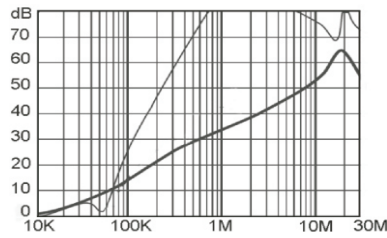
SGAD3-3A3



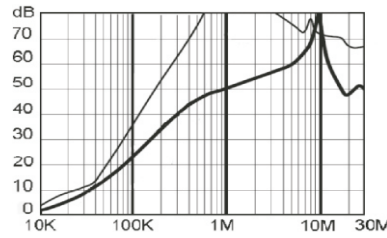
SGAE4-6A3



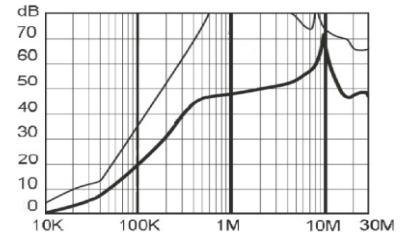
SGAG4-10A3



SGAG4-20A3



SGAH4-30A3



SGAH4-40A3

外形尺寸图:Outline Drawing&Dimensions

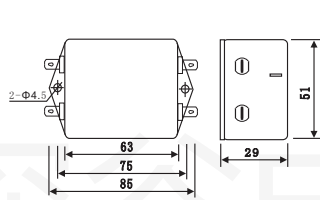


Fig.1

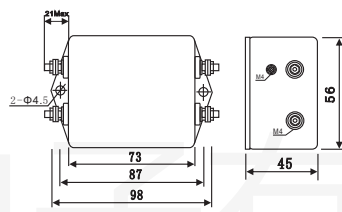


Fig.2

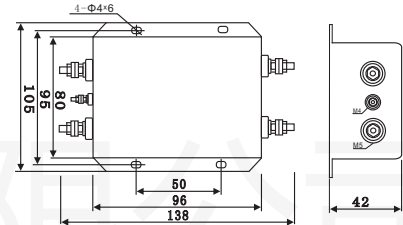


Fig.3

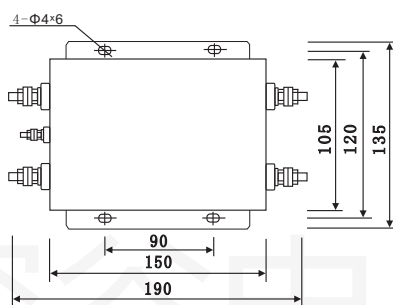


Fig.4

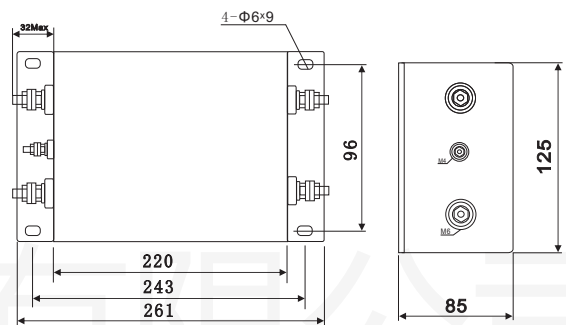


Fig.5

安装指导

- (1) 滤波器金属外壳与机箱平面保证良好接触, 并且确保机箱地线接地. 滤波器安装时, 输入与输出线拉开距离, 切勿平行走线, 避免任何形式的线间耦合。
- (2) 滤波器的安装位置紧靠机箱电源输入端口, 最大限度缩短输入线在机箱内的长度, 减少辐射干扰。
- (3) 焊片及引线通过焊接连接时, 防止焊片和引线有氧化现象, 请选用带活性助焊剂的锡丝焊接, 并且调整好焊具所需温度, 实现最佳的焊接效果。
- (4) 螺栓式及端子式滤波器, 安装输入输出接线时, 锁螺母和锁螺钉时, 力度不应超过螺栓最大扭矩。
- (5) 避免短路, 滤波器端口连接接线建议做绝缘处理。