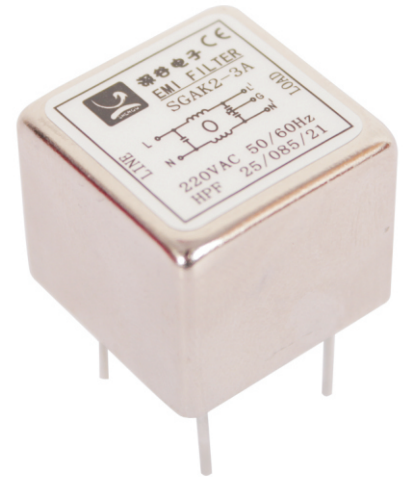


**特点和应用: Features and Applications**

- ◆ PCB插针式安装，结构紧凑，性价比高
- ◆ 选用优质磁芯元器件，性能优异
- ◆ 用于各种电子测量仪器及医疗设备
- PCB pin installation, compact structure and high cost performance
- High quality magnetic core components are selected with excellent performance
- It is used for various electronic measuring instruments and medical equipment

**技术参数: Technical Specifications**

额定电压 Rated Voltage	115/250VAC
工作频率 Operating Frequency	50/60Hz
额定电流 Rated Current	1—20A
耐压试验(一分钟) Test Voltage(1min)	1500VDC(Line/Line) 2000VAC(Line/Ground)
气候类别 Climatic Category	25/085/21

型号 Model	额定电流 Rated Current (A)	外型尺寸 Dimension fig	绝缘电阻 Insulation Resistance	泄 漏 电 流 Leakage Current ( $\leq$ mA)	电路图 Circuit	端子方式 Terminal	
						入Input	出Output
SGAK22-1A2	1A	3	$\geq 500\text{M}\Omega$	0.5	3		
SGAK2-3A	3A	1	$\geq 500\text{M}\Omega$	0.5	1		
SGAK2-6A	6A	1	$\geq 500\text{M}\Omega$	0.5	1		
SGAK22-6A	6A	2	$\geq 500\text{M}\Omega$	1.0	1		
SGAK22-10A	10A	2	$\geq 500\text{M}\Omega$	1.0	1		
SGAL2-10A	10A	4	$\geq 500\text{M}\Omega$	1.5	2		
SGAC2-20A	20A	5	$\geq 500\text{M}\Omega$	1.5	2		

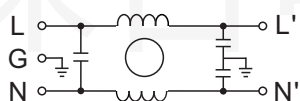
**电路原理图: Electrical Schematics**

Fig.1

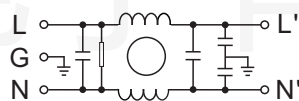


Fig.2

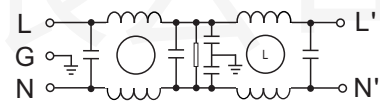


Fig.3

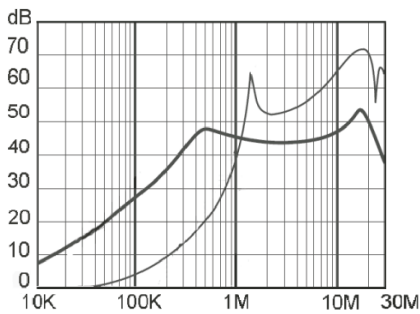
备注:可根据客户要求定做滤波器

Note: Customers may request customized filters

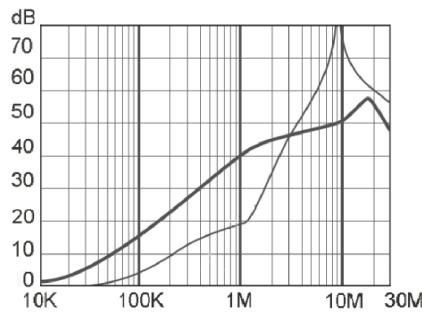


典型插入损耗：(50Ω 测试系统) Typical Insertion Losses: (Measured in 50Ω system)

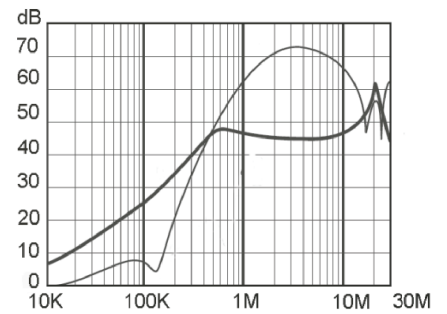
-- 共模 (Common Mode) -- 差模 (Differential Mode)



SGAK2-3A



SGAK22-6A



SGAc2-10A(20A)

外形尺寸图: Outline Drawing & Dimensions

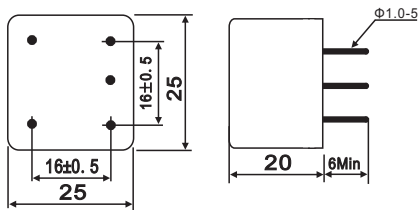


Fig.1

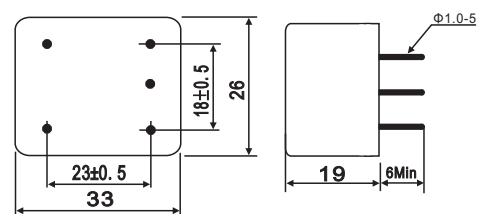


Fig.2

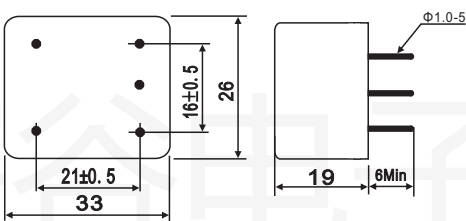


Fig.3

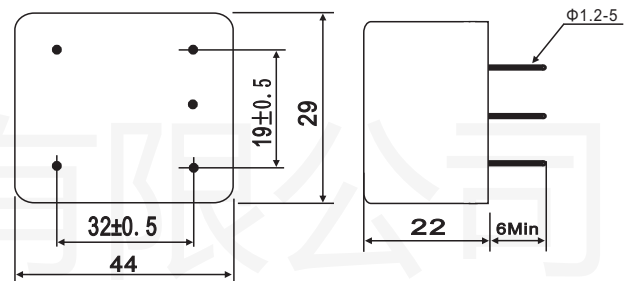


Fig.4

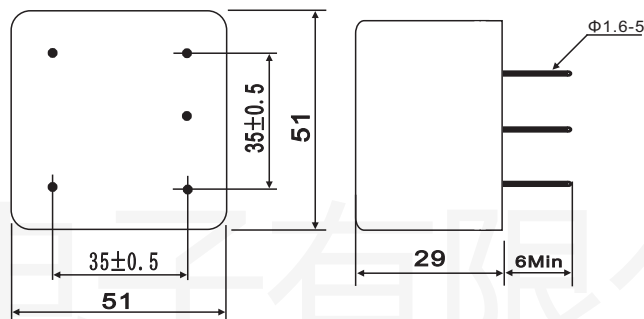


Fig.5

安装指导

- (1) 插针式滤波器最好安装在主板电源输入端口。
- (2) 滤波器尽可能紧贴PCB板安装。
- (3) 避免产品插针氧化, 此类产品不应储存在高湿度环境, 如储存超过半年, 最好插针表面处理后再焊接。