



## 特点和应用 Features and Applications

- ◆ 采用新型端子台设计, 接线便捷, 附有安全罩
- ◆ 选用优质磁芯和元件
- ◆ 具有较高的噪声抑制能力
- ◆ 能有效抑制线与线, 线与地之间的噪声干扰
- ◆ 适用于精雕机, 绣花机、等各种工业自动化设备
- The new terminal block design is adopted, with convenient wiring and safety cover
- Select high-quality magnetic cores and components
- It has high noise suppression energy
- It can effectively suppress the noise between lines and between lines and ground
- It is suitable for various industrial automation equipment such as precision carving machine, embroidery machine and so on



## 技术参数: Technical Specifications

额定电压 Rated Voltage	115/250VAC
工作频率 Operating Frequency	50/60Hz
额定电流 Rated Current	6A—200A
耐压试验(一分钟) Test Voltage(1min)	1500VDC(Line/Line) 1750VAC(Line/Ground)
气候类别 Climatic Category	25/085/21

型号 Model	额定电流 Rated Current (A)	外型尺寸 Dimension fig	绝缘电阻 Insulation Resistance	泄漏电流 Leakage Current (≤mA)	电路图 Circuit Diagram fig	端子方式 Terminal	
						输入 VIN	输出 VO
SGAX6-6A	6A	1	≥500MΩ	0.5	1		
SGAX6-10A	10A	1	≥500MΩ	0.6	1		
SGAD6-6A2	6A	2	≥500MΩ	0.5	2		
SGAD6-10A	10A	2	≥500MΩ	0.7	2		
SGAD6-20A	20A	2	≥500MΩ	0.7	2		
SGAE6-6A3	6A	3	≥500MΩ	0.8	3		
SGAE6-10A2	10A	3	≥500MΩ	0.8	2		
SGAE6-20A2	20A	3	≥500MΩ	0.8	2		
SGAE6-30A	30A	3	≥500MΩ	1.0	2		
SGAW6-10A3	10A	4	≥500MΩ	1.0	4		
SGAW6-20A3	20A	4	≥500MΩ	1.0	4		
SGAW6-30A3	30A	4	≥500MΩ	1.0	4		
SGAU6-50A2	50A	5	≥500MΩ	1.5	2		
SGAH6-50A2	50A	6	≥500MΩ	1.8	3		

注) 常规型号列表, 未列出型号可联系销售索取资料

## 电路原理图 Electrical Schematics

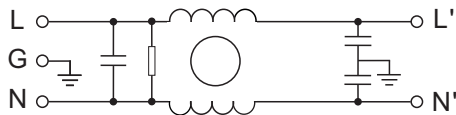


Fig.1

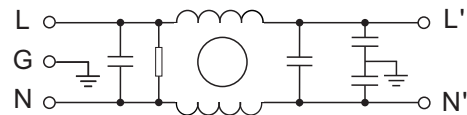


Fig.2

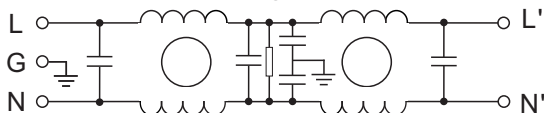


Fig.3

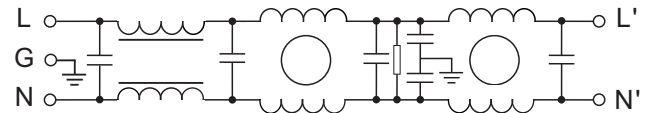


Fig.4

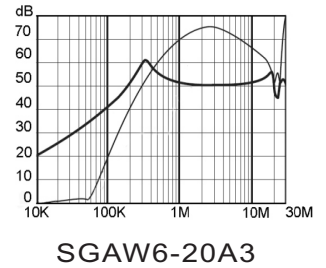
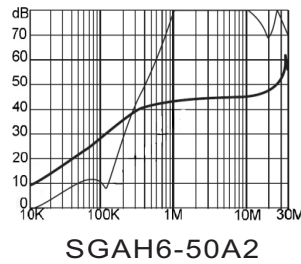
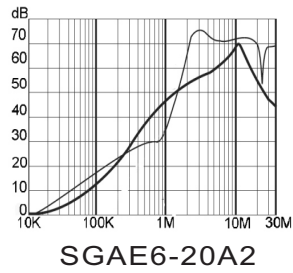
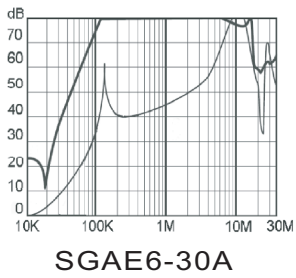
备注: 可根据客户要求定做滤波器

Note: Customers may request customized filters



典型插入损耗: (50 Ω 测试系统) Typical Insertion Losses: (Measured in 50Ω system)

-- 共模 (Common Mode) -- 差模 (Differential Mode)



外形尺寸图: Outline Drawing & Dimensions

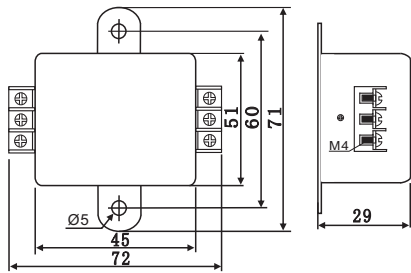


Fig.1

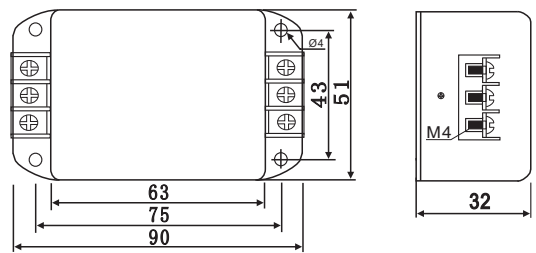


Fig.2

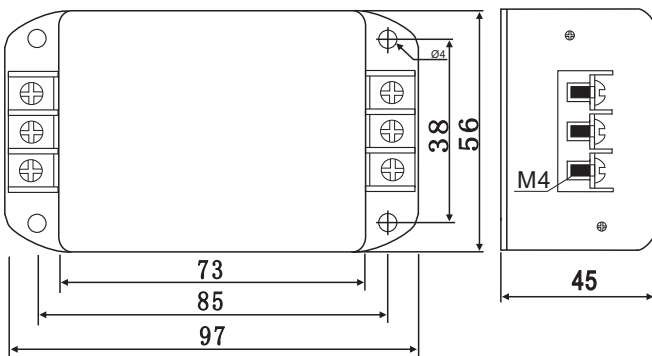


Fig.3

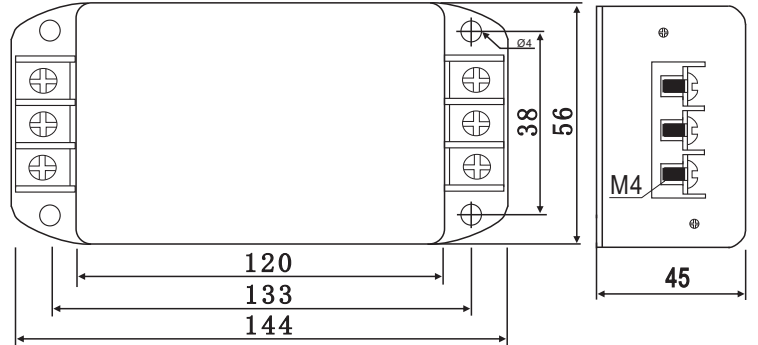


Fig.4

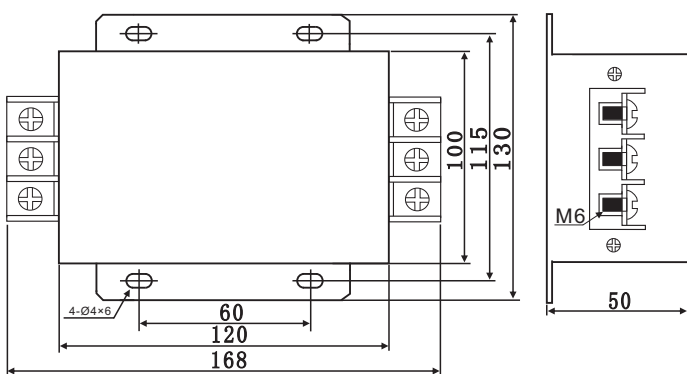


Fig.5

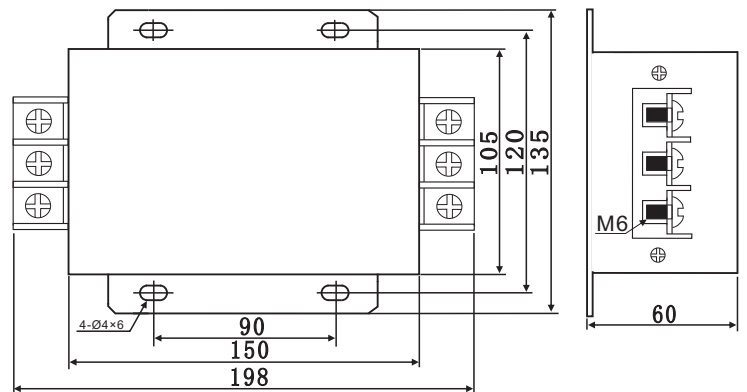


Fig.6

安装指导

- (1) 滤波器金属外壳与机箱平面保证良好接触, 并且确保机箱地线接地. 滤波器安装时, 输入与输出线拉开距离, 切勿平行走线, 避免任何形式的线间耦合。
- (2) 滤波器的安装位置紧靠机箱电源输入端口, 最大限度缩短输入线在机箱内的长度, 减少辐射干扰。
- (3) 螺栓式及端子式滤波器, 安装输入输出接线时, 锁螺母和锁螺钉时, 力度不应超过螺栓最大扭矩。