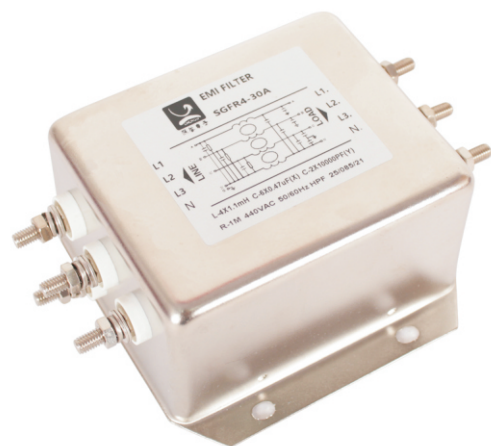


**特点和应用：Features and Applications**

- ◆ 同等功率下相对较小的体积
- ◆ 主要用来抑制工业电网通过电源线对设备的电磁干扰
- ◆ 对线—线和线—地间干扰具有优良的抑制能力
- ◆ 适用于三相四线制供电设备
- Relative small volume at equal power
- Mainly used to suppress the EMI to the equipment in industrial power net
- Provide high performance of effectively suppressing EMI both in line-to-line and line-to-ground
- Available for three phases ,four lines series power supply equipments

**技术参数：Technical Specifications**

额定电压 Rated Voltage	440VAC
工作频率 Operating Frequency	50/60Hz
额定电流 Rated Current	3—200A
耐压试验(一分钟) Test Voltage(1min)	1500VDC(Line/Line) 1750VAC(Line/Ground)
气候类别 Climatic Category	25/085/21

型号 Model	额定电流 Rated Current (A)	外型尺寸 Dimension fig	绝缘电阻 Insulation Resistance	泄漏电流 Leakage Current (μ mA)	电路图 Circuit Diagram fig	端接方式 Terminal	
SGFF3-6A	6A	1	$\geq 500\text{M}\Omega$	1.2	1		
SGFF3-10A	10A	1	$\geq 500\text{M}\Omega$	1.5	1		
SGFR4-20A	20A	2	$\geq 500\text{M}\Omega$	1.5	2		
SGFR4-30A	30A	2	$\geq 500\text{M}\Omega$	2.0	2		
SGFR4-40A	40A	2	$\geq 500\text{M}\Omega$	2.5	2		
SGFU4-50A	50A	3	$\geq 500\text{M}\Omega$	3.0	2		
SGFH4-60A	60A	4	$\geq 500\text{M}\Omega$	4.0	2		
SGFT4-60A	60A	5	$\geq 500\text{M}\Omega$	5.0	2		
SGFI4-80A	80A	6	$\geq 500\text{M}\Omega$	8.5	2		
SGFI4-100A	100A	6	$\geq 500\text{M}\Omega$	9.5	2		

注) 常规型号列表, 未列出型号可联系销售索取资料

备注: 可根据客户要求定做滤波器

Note: Customers may request customized filters



电路原理图:Electrical Schematics

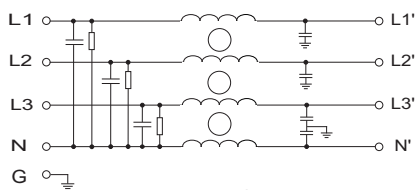


Fig.1

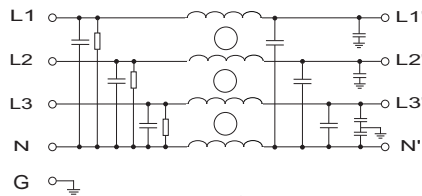
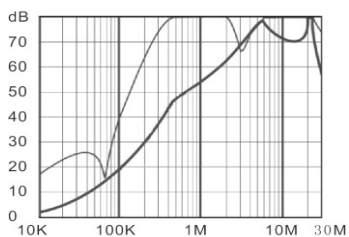


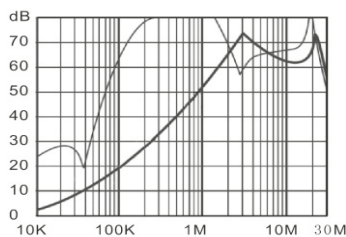
Fig.2

典型插入损耗: (50Ω 测试系统) Typical Insertion Losses: (Measured in 50Ω system)

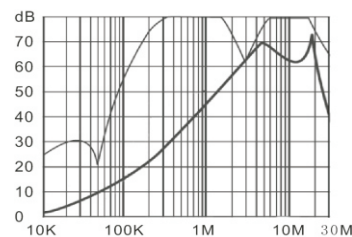
-- 共模 (Common Mode) -- 差模 (Differential Mode)



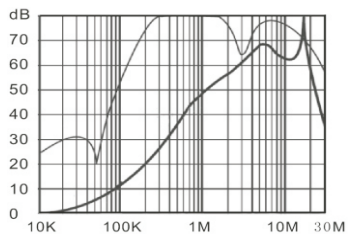
SGFF3-6A



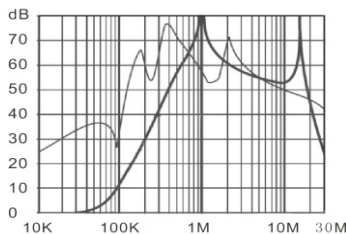
SGFR4-20A



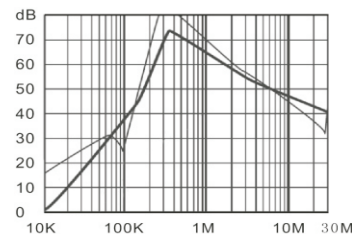
SGFR4-30A



SGFT4-60A



SGFI4-80A



SGFI4-100A

外形尺寸图:Outline Drawing&Dimensions

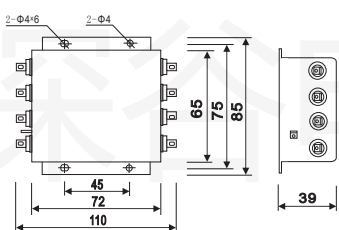


Fig.1

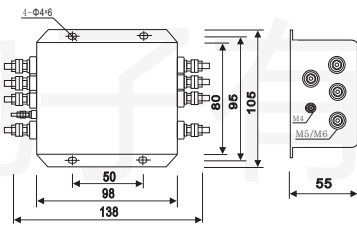


Fig.2

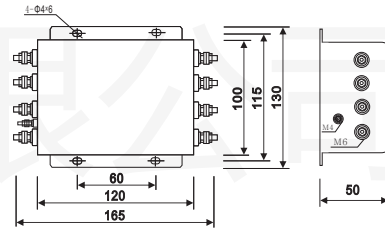


Fig.3

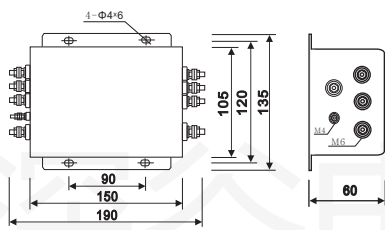


Fig.4

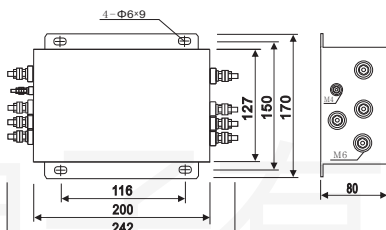


Fig.5

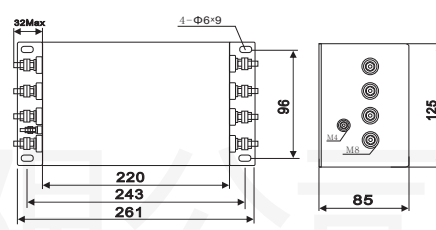


Fig.6

安装指导

- (1) 滤波器金属外壳与机箱平面保证良好接触, 并且确保机箱地线接地. 滤波器安装时, 输入与输出线拉开距离, 切勿平行走线, 避免任何形式的线间耦合。
- (2) 滤波器的安装位置紧靠机箱电源输入端口, 最大限度缩短输入线在机箱内的长度, 减少辐射干扰。
- (3) 螺栓式及端子式滤波器, 安装输入输出接线时, 锁螺母和锁螺钉时, 力度不应超过螺栓最大扭矩。
- (4) 避免短路, 滤波器端口连接接线建议做绝缘处理。