

**特点和应用：Features and Applications**

- ◆ IEC标准插座式一体化滤波器
- ◆ 普通型、单开关、单保险丝组合
- ◆ 适用于仪器仪表、开关电源及医疗设备
- IEC standard socket type integrated filter
- Common type, single switch, single fuse combination
- It is suitable for instruments, switching power supply and medical equipment

**技术参数：Technical Specifications**

额定电压 Rated Voltage	115/250VAC
工作频率 Operating Frequency	50/60Hz
额定电流 Rated Current	3—15A
耐压试验(一分钟) Test Voltage(1min)	1500VDC(Line/Line)
	1500VAC(Line/Ground)
气候类别 Climatic Category	25/085/21

型号 Model	额定电流 (A)	外型尺寸 Dimension fig	绝缘电阻 Insulation Resistance	泄漏电流 Leakage Current ( $\mu$ A)	电路图 Circuit Diagram fig	端接方式 Terminals	
						入Input	出Output
SGAM3-3A	3A	1	$\geq 500M\Omega$	0.5/0.005	1/5		
SGAM3-6A	6A	1	$\geq 500M\Omega$	0.5/0.005	1/5		
SGAM3-10A	10A	1	$\geq 500M\Omega$	0.7/0.005	1/5		
SGAM13-3A	3A	2	$\geq 500M\Omega$	0.5/0.005	1/5		
SGAM13-6A	6A	2	$\geq 500M\Omega$	0.5/0.005	1/5		
SGAM13-10A	10A	2	$\geq 500M\Omega$	0.7/0.005	1/5		
SGAN3-3A	3A	3	$\geq 500M\Omega$	0.5/0.005	2/6		
SGAN3-6A	6A	3	$\geq 500M\Omega$	0.5/0.005	2/6		
SGAN3-10A	10A	3	$\geq 500M\Omega$	0.7/0.005	2/6		
SGAN3-3A-2	3A	4	$\geq 500M\Omega$	0.5/0.005	3/7		
SGAN3-6A-2	6A	4	$\geq 500M\Omega$	0.7/0.005	3/7		
SGAN3-10A-2	10A	4	$\geq 500M\Omega$	0.7/0.005	3/7		
SGAP3-6A2	6A	5	$\geq 500M\Omega$	0.8/0.005	4/8		
SGAP3-10A	10A	5	$\geq 500M\Omega$	0.8/0.005	4/8		
SGAP3-10A2	10A	5	$\geq 500M\Omega$	0.8/0.005	4/8		
SGAP3-15A2	15A	5	$\geq 500M\Omega$	0.8/0.005	4/8		

注)：SGXXX-XX为通用型 SGHXXX-XX为医用型号

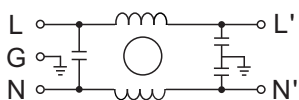
**电路原理图：Electrical Schematics**

Fig.1

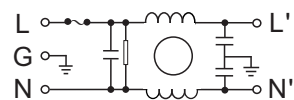


Fig.2

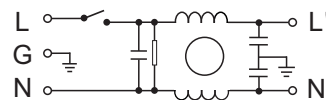


Fig.3

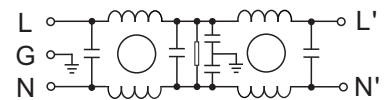


Fig.4

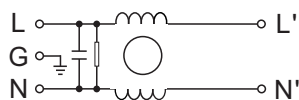


Fig.5

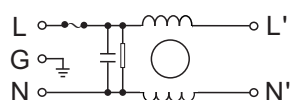


Fig.6

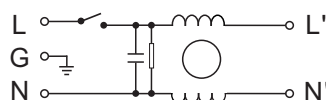


Fig.7

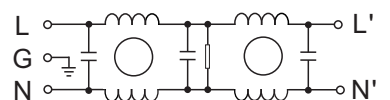


Fig.8

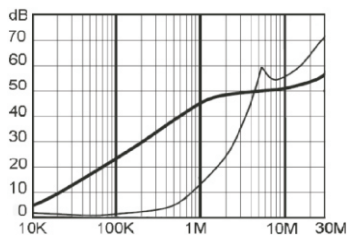
备注：可根据客户要求定做滤波器

Note: Customers may request customized filters

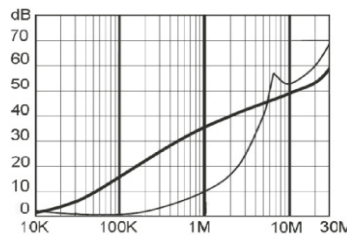


典型插入损耗: (50Ω 测试系统) Typical Insertion Losses: ( Measured in 50Ω system)

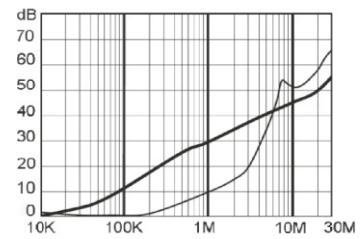
-- 共模 (Common Mode) -- 差模 (Differential Mode)



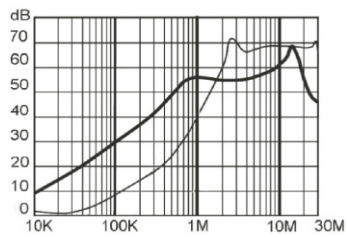
SGAM3-3A



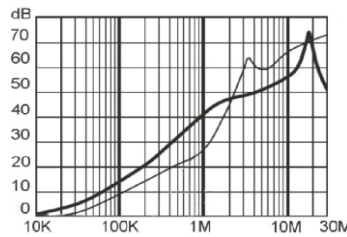
SGAM3-6A



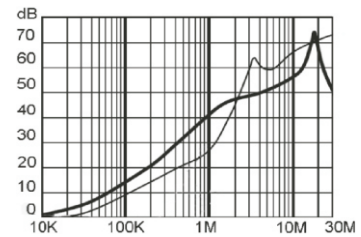
SGAN3-3A



SGAN3-6A



SGAN3-6A-2



SGAP3-10A

外形尺寸图:Outline Drawing&Dimensions(mm)

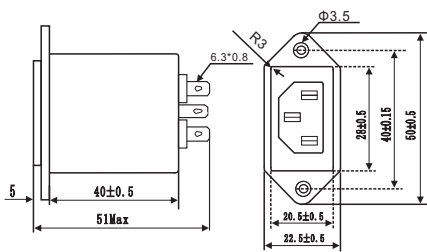


Fig.1

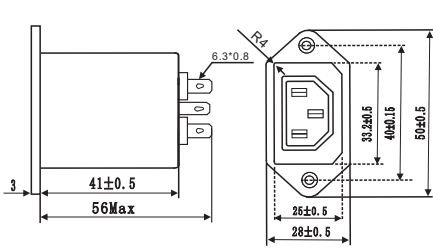


Fig.2

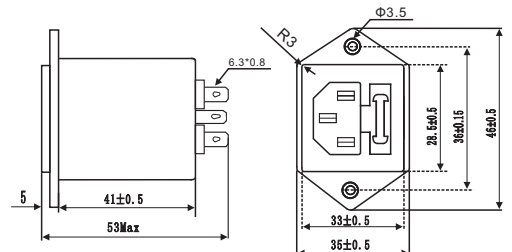


Fig.3

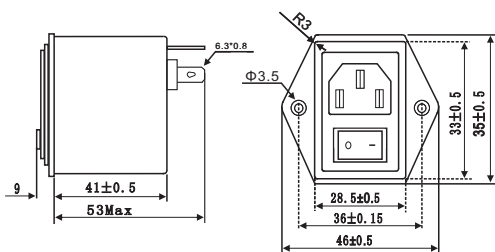


Fig.4

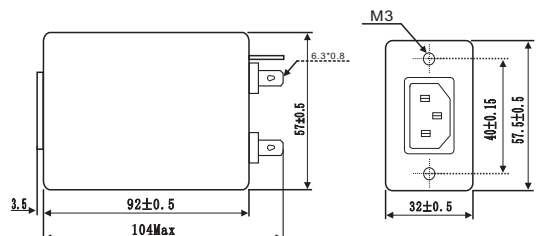


Fig.5

安装指导

- (1) 滤波器金属外壳与机箱平面保证良好接触, 并且确保机箱地线接地. 滤波器安装时, 输入与输出线拉开距离, 切勿平行走线, 避免任何形式的线间耦合.
- (2) 滤波器的安装位置紧靠机箱电源输入端口, 最大限度缩短输入线在机箱内的长度, 减少辐射干扰.
- (3) 焊片及引线通过焊接连接时, 防止焊片和引线有氧化现象, 请选用带活性助焊剂的锡丝焊接, 并且调整好焊具所需温度, 实现最佳的焊接效果.
- (4) 避免短路, 滤波器端口连接接线建议做绝缘处理.