



特点和应用: Features and Applications

- ◆ 专为抑制直流电源线干扰而设计
- ◆ 具有良好的共模和差模干扰抑制特性
- ◆ 适用于直流电源输入端,如程控交换机,开关电源及各类直流电源的敏感电子电子设备
- Designed to suppress DC power line interference
- It has good common mode and differential mode interference suppression characteristics
- It is suitable for DC power input terminal, such as program-controlled switch, switching power supply and sensitive electronic equipment of various DC power supplies



技术参数: Technical Specifications

额定电压	Rated Voltage	12VDC/220VDC
额定电流	Rated Current	3 -200A
耐压测试 (一分钟)	Test Voltage (1min)	1500VDC(Line/Ground)
气候类别	Climatic Category	25/082/21
平均无故障时间	MTBF	0.3Million hours@40°C

型号 Model	额定电流 Rated Current (A)	外型尺寸 Dimension fig	绝缘电阻 Insulation Resistance	泄漏电流 Leakage Current (< mA)	电路图 Circuit Diagram fig	端子方式 Terminal			
						1	2	3	4
SGDK2-3A/6A	3A/6A	1	≥100MΩ		1	1			
SGDA1-3A/6A	3A/6A	2	≥100MΩ		1	1			
SGDD3-10A	10A	3	≥100MΩ		2		1		
SGDD3-20A	20A	3	≥100MΩ		2		1		
SGDF4-30A	30A	4	≥100MΩ		2			1	2
SGDG4-40A	40A	5	≥100MΩ		2			1	2
SGDG4-50A	50A	5	≥100MΩ		2			1	2
SGDG4-60A	60A	5	≥100MΩ		2			1	2
SGDH4-80A	80A	6	≥100MΩ		2			1	
SGDH4-100A	100A	6	≥100MΩ		2			1	
SGDA1-3A2	3A	2	≥100MΩ		3	1			
SGDA1-6A2	6A	2	≥100MΩ		3	1			
SGDD3-10A2	10A	3	≥100MΩ		3		1		
SGDD3-20A2	20A	3	≥100MΩ		3		1	1	
SGDG4-30A2	30A	5	≥100MΩ		3			1	
SGDH4-50A2	50A	6	≥100MΩ		3			1	
SGDH4-60A2	60A	6	≥100MΩ		3			1	
SGDH4-80A2	80A	6	≥100MΩ		3			1	
SGDH4-100A2	100A	6	≥100MΩ		3			1	

电路原理图: Electrical Schematics

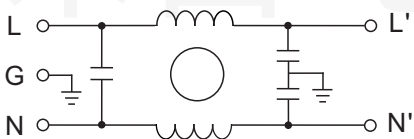


Fig.1

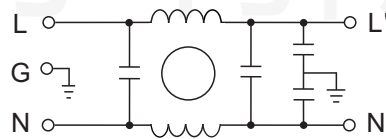


Fig.2

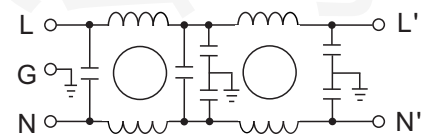


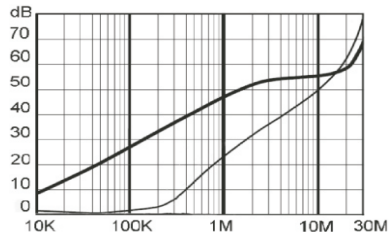
Fig.3

备注:可根据客户要求定做滤波器

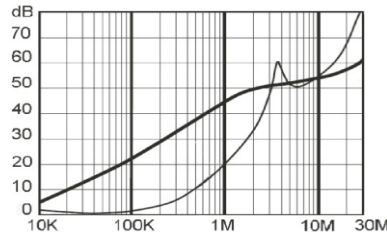
Note:Customers may request customized filters

典型插入损耗：(50Ω测试系统) Typical Insertion Losses: (Measured in 50Ω system)

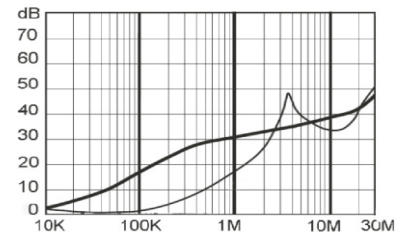
-- 共模 (Common Mode) -- 差模 (Differential Mode)



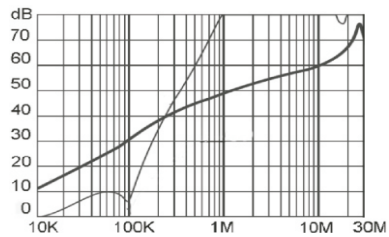
SGDK2-3A



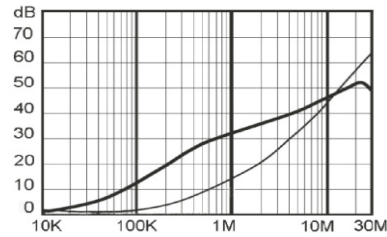
SGDA1-3A



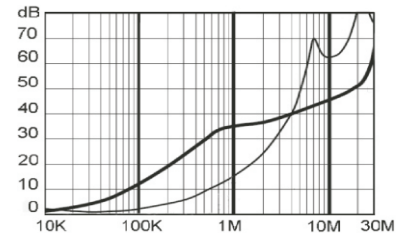
SGDK2-6A



SGDD3-10A



SGDD3-20A



SGDF4-30A

外形尺寸图: Outline Drawing & Dimensions

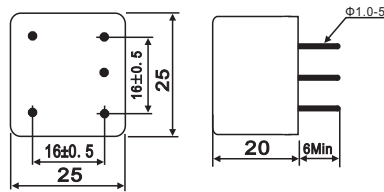


Fig.1

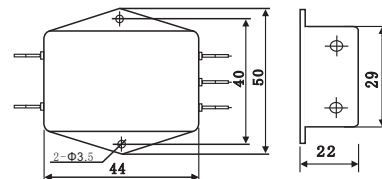


Fig.2

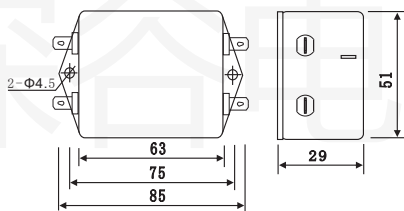


Fig.3

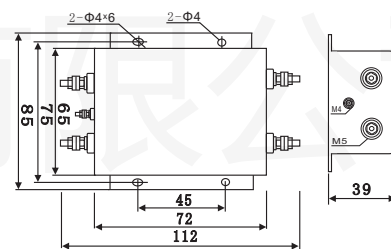


Fig.4

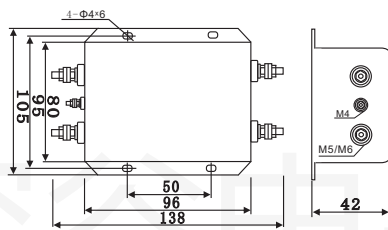


Fig.5

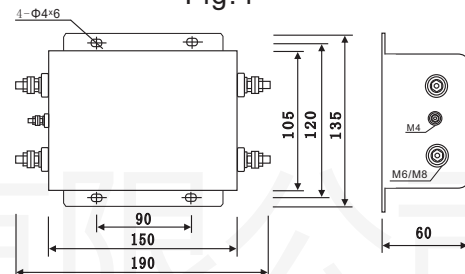


Fig.6

安装指导

- (1) 滤波器金属外壳与机箱平面保证良好接触, 并且确保机箱地线接地. 滤波器安装时, 输入输出线拉开距离, 切勿平行走线, 避免任何形式的线间耦合.
- (2) 滤波器的安装位置紧靠机箱电源输入端口, 最大限度缩短输入线在机箱内的长度, 减少辐射干扰.
- (3) 焊片及引线通过焊接连接时, 防止焊片和引线有氧化现象, 请选用带活性助焊剂的锡丝焊接, 并且调整好焊具所需温度, 实现最佳的焊接效果.
- (4) 螺栓式及端子式滤波器, 安装输入输出接线时, 锁螺母和锁螺钉时, 力度不应超过螺栓最大扭矩.
- (5) 避免短路, 滤波器端口连接接线建议绝缘处理.